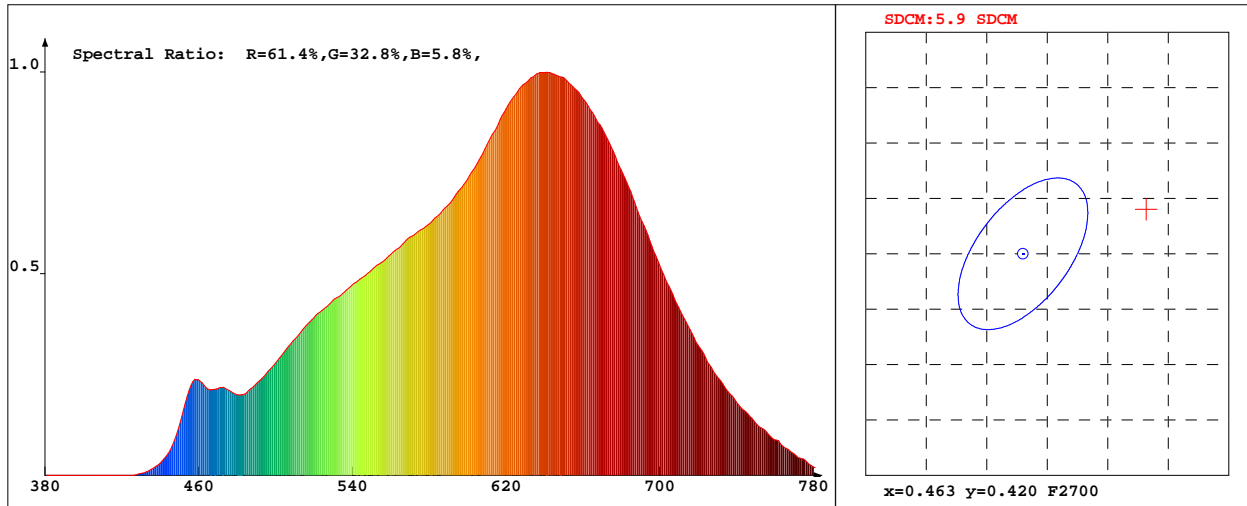


LED Test Report

Product Mark

Product Type : 5050 2700k 60D 12V
 Temperature : 25'C
 Operator : 01
 Remark: BIN: VF:12V P:12.5W

Manufacturer : HULKLED TECHNOLOGY CO.,LTD
 Humidity : 50%
 Test Date : 2018-09-10 15:17:56



Chroma Parameters

Chro.Coor.:x=0.4732 y=0.4240 u=0.2650 v=0.3562 duv=0.0038
 CCT: 2624K Dominant Wave.:583.5nm Purity:69.3% Centre Wave:624.0nm
 Flux RGB Ratio:R=26.7%,G=71.8%,B=1.5% Peak Wave:640.5nm Half Width:154.1nm

Rendering Index:Ra= 97.4 CRI= 96.3

R1 =99 R2 =99 R3 =97 R4 =96 R5 =98 R6 =99 R7 =96 R8 =96
 R9 =93 R10=97 R11=97 R12=85 R13=99 R14=97 R15=97
 Fidelity Index(Rf)=88.3 Gamut Index(Rg)=94.6

Photo Parameters

Flux:979.46lm Effi.:78.3lm/W Radiant:8452.0mW Iv:0.0mcd
 Efficiency:0.165 Effi Level:A+ (EU 874-2012)

Ele. Parameters

Voltage:U=12.02V Current:I=1.0400A
 Power:P=12.502W Power Factor:PF=1.000

Instrument state

Instrument:Hopoo HP8000S Integral Time: 162.921ms VPeak: 15800
 VDark: 1376 Scan Range: 380-780nm Product ID: 201212248

IES TM-30-2015 Test Report

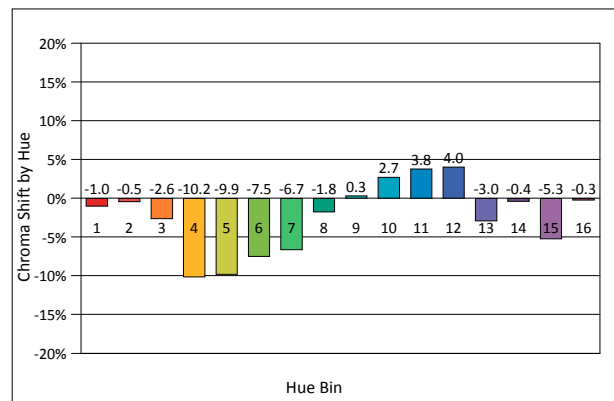
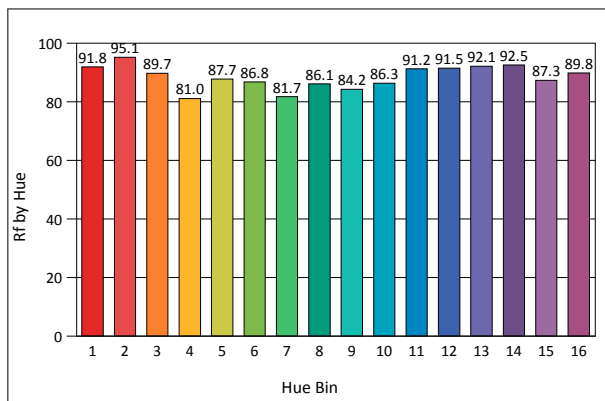
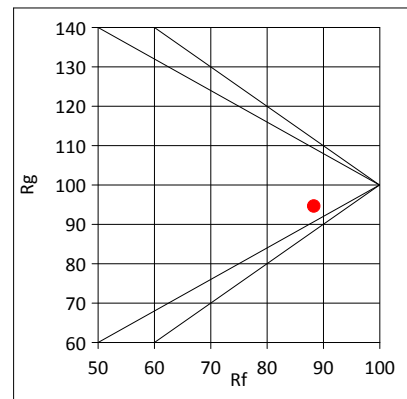
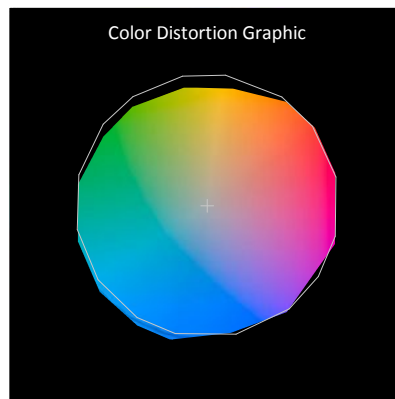
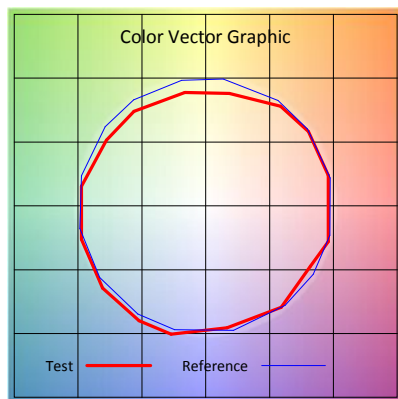
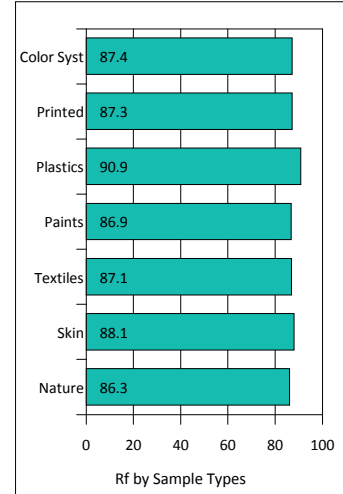
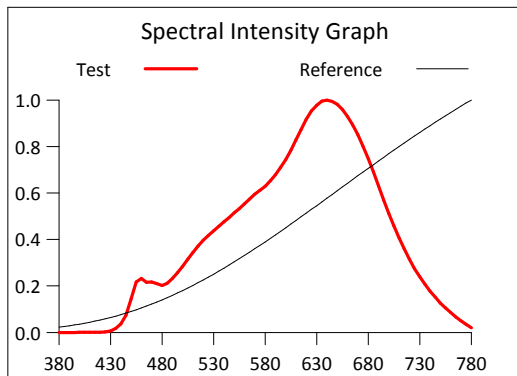
Product Mark

Product Type : 5050 2700k 60D 12V
 Temperature : 25°C
 Operator : 01
 Remark: BIN: VF:12V P:12.5W

Manufacturer : HULKLED TECHNOLOGY CO.,LTD
 Humidity : 50%
 Test Date : 2018-09-10 15:17:56

Rf: 88.3 CCT(K): 2624 u': 0.2650
 Rg: 94.6 LER: 250.7 Duv: 0.0038 v': 0.3562

Hue Bin	Rf	Graphic Shifts (%)	
		Chroma	Hue
1	91.8	-1.0%	2.2%
2	95.1	-0.5%	-2.1%
3	89.7	-2.6%	-4.2%
4	81.0	-10.2%	-6.7%
5	87.7	-9.9%	-0.5%
6	86.8	-7.5%	4.8%
7	81.7	-6.7%	8.2%
8	86.1	-1.8%	8.2%
9	84.2	0.3%	8.5%
10	86.3	2.7%	8.1%
11	91.2	3.8%	3.8%
12	91.5	4.0%	-2.0%
13	92.1	-3.0%	-4.6%
14	92.5	-0.4%	-3.3%
15	87.3	-5.3%	4.0%
16	89.8	-0.3%	-5.0%



IES TM-30-2015 Test Report

Product Mark

Product Type : 5050 2700k 60D 12V
 Temperature : 25'C
 Operator : 01
 Remark: BIN: VF:12V P:12.5W

Manufacturer : HULKLED TECHNOLOGY CO.,LTD
 Humidity : 50%
 Test Date : 2018-09-10 15:17:56

