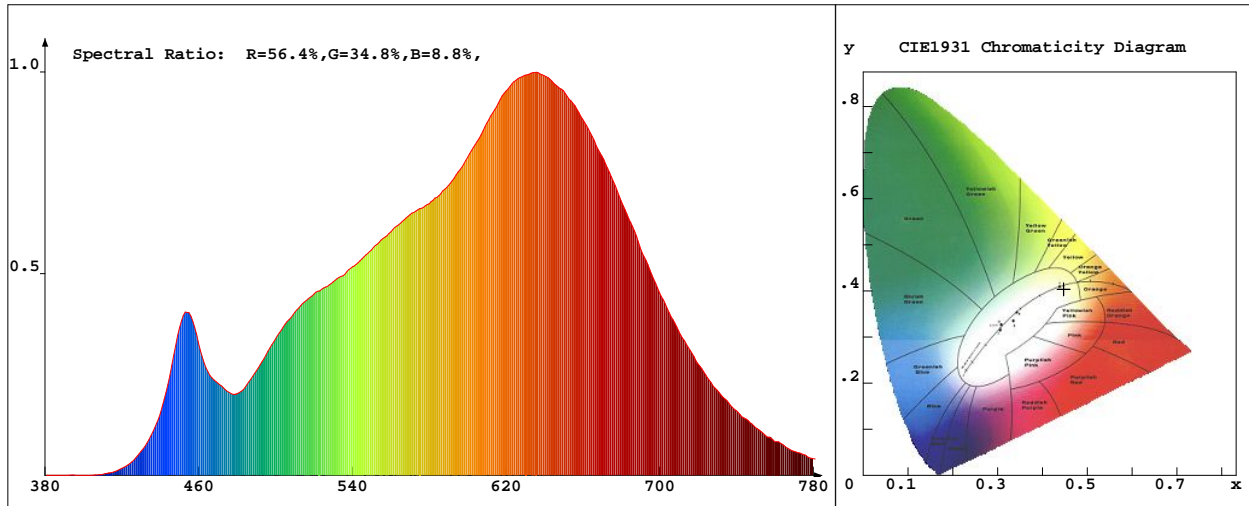


LED Test Report

Product Mark

Product Type : 3528 3000K 1M
 Temperature : TECHNOLOGY'C
 Operator : 002
 Remark: BIN:303 VF:2.8-3.0V

Manufacturer : SHENZHEN HULKLED TECHNOLOGY CO.,LTD
 Humidity : 50%
 Test Date : 2018-09-03 12:12:56



Chroma Parameters

Chro.Coor.:x=0.4473 y=0.4040 u=0.2573 v=0.3486 duv=-0.0013
 CCT: 2832K Dominant Wave.:584.0nm Purity:55.5% Centre Wave:614.7nm
 Flux RGB Ratio:R=25.4%,G=72.9%,B=1.7% Peak Wave:634.7nm Half Width:159.4nm

Rendering Index:Ra= 98.1 CRI= 97.0

R1 =100 R2 =99 R3 =98 R4 =98 R5 =100 R6 =98 R7 =97 R8 =95
 R9 =90 R10=98 R11=97 R12=90 R13=100 R14=98 R15=98
 Fidelity Index(Rf)=94.9 Gamut Index(Rg)=101.4

Photo Parameters

Flux:1403.66lm Effi.:75.0lm/W Radiant:12350.2mW Iv:0.0mcd
 Efficiency:0.000 Effi Level:A++ (EU 874-2012)

Ele. Parameters

Voltage:U=23.99V Current:I=0.7800A
 Power:P=0.005W Power Factor:PF=1.000

Instrument state

Instrument:Hopoo HP8000S Integral Time: 88.658ms VPeak: 14840
 VDark: 1303 Scan Range: 380-780nm Product ID: 201212248

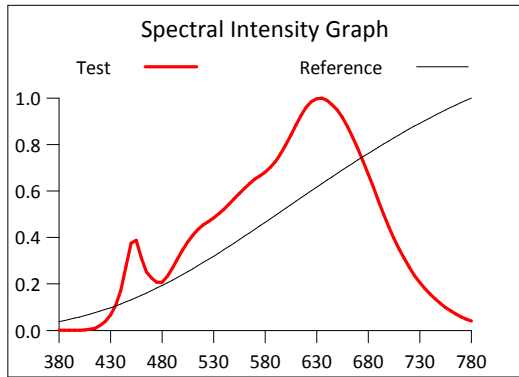
IES TM-30-2015 Test Report

Product Mark

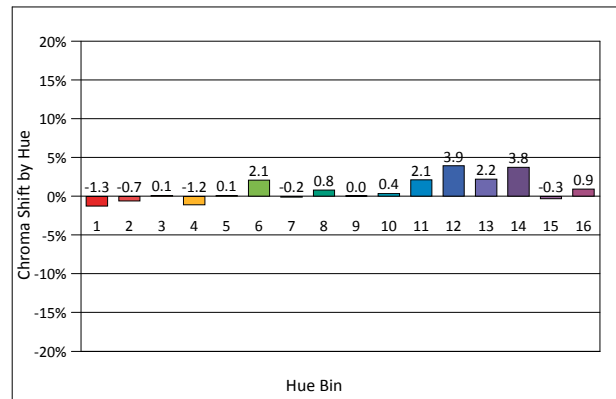
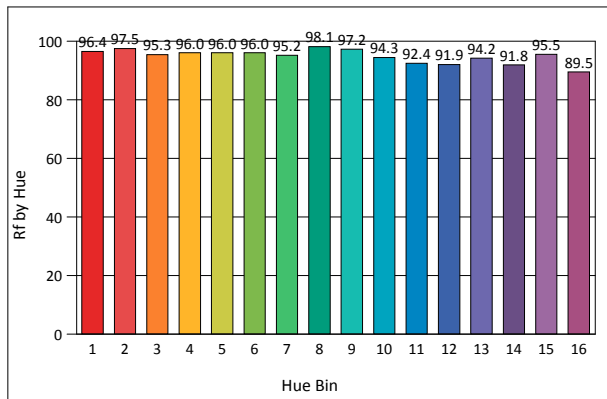
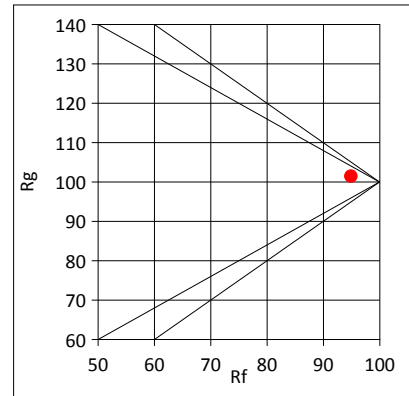
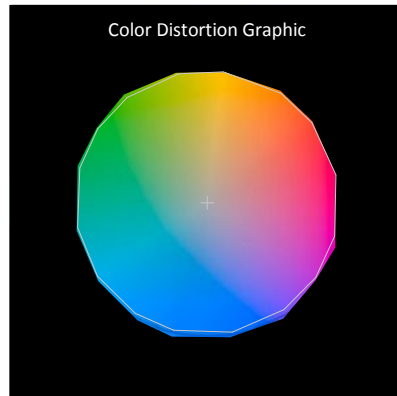
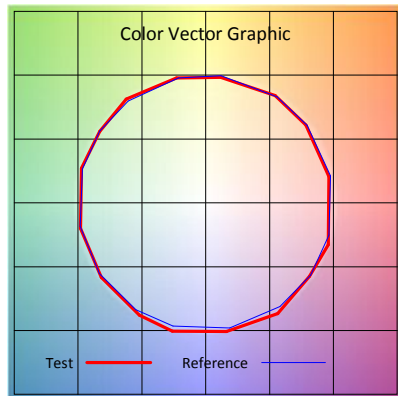
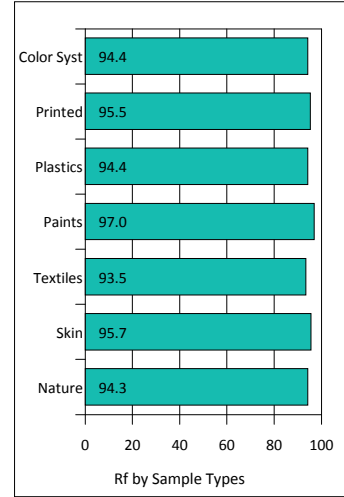
Product Type : 3528 3000K 1M
 Temperature : TECHNOLOGY'C
 Operator : 002
 Remark: BIN:303 VF:2.8-3.0V

Manufacturer : SHENZHEN HULKLED TECHNOLOGY CO.,LTD
 Humidity : 50%
 Test Date : 2018-09-03 12:12:56

Rf: 94.9 CCT(K): 2832 u': 0.2573
 Rg: 101.4 LER: 260.0 Duv: -0.0013 v': 0.3486



Hue Bin	Rf	Graphic Shifts (%)	
		Chroma	Hue
1	96.4	-1.3%	-0.1%
2	97.5	-0.7%	0.6%
3	95.3	0.1%	1.9%
4	96.0	-1.2%	0.1%
5	96.0	0.1%	1.6%
6	96.0	2.1%	0.6%
7	95.2	-0.2%	0.1%
8	98.1	0.8%	-0.4%
9	97.2	0.0%	1.4%
10	94.3	0.4%	3.2%
11	92.4	2.1%	4.6%
12	91.9	3.9%	0.3%
13	94.2	2.2%	-3.2%
14	91.8	3.8%	-4.5%
15	95.5	-0.3%	-1.5%
16	89.5	0.9%	-7.5%



IES TM-30-2015 Test Report

Product Mark

Product Type : 3528 3000K 1M
 Temperature : TECHNOLOGY'C
 Operator : 002
 Remark: BIN:303 VF:2.8-3.0V

Manufacturer : SHENZHEN HULKLED TECHNOLOGY CO.,LTD
 Humidity : 50%
 Test Date : 2018-09-03 12:12:56

