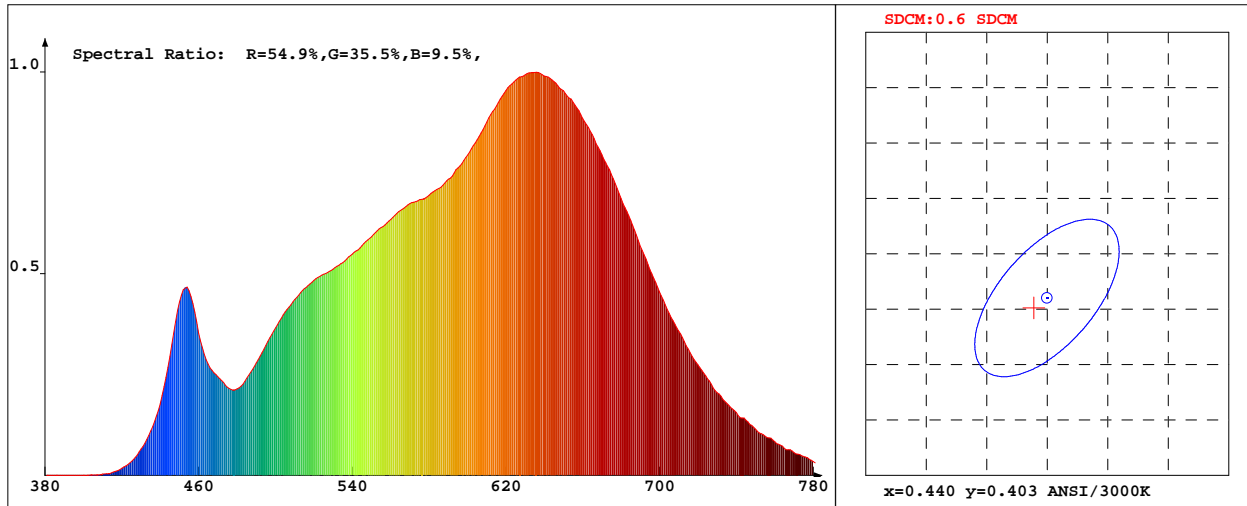


LED Test Report

Product Mark

Product Type : 3528 3000K 1M
 Temperature : TECHNOLOGY'C
 Operator : 002
 Remark: BIN:303 VF:2.8-3.0V

Manufacturer : SHENZHEN HULKLED TECHNOLOGY CO.,LTD
 Humidity : 50%
 Test Date : 2018-09-03 14:02:43



Chroma Parameters

Chro.Coor.:x=0.4389 y=0.4021 u=0.2527 v=0.3473 duv=-0.0010
 CCT: 2952K Dominant Wave.:583.4nm Purity:52.4% Centre Wave:610.0nm
 Flux RGB Ratio:R=24.5%,G=73.6%,B=1.8% Peak Wave:633.8nm Half Width:168.8nm

Rendering Index:Ra= 98.2 CRI= 97.0

R1 =100 R2 =99 R3 =97 R4 =98 R5 =99 R6 =98 R7 =98 R8 =97
 R9 =92 R10=97 R11=97 R12=88 R13=100 R14=97 R15=99
 Fidelity Index(Rf)=94.8 Gamut Index(Rg)=101.6

Photo Parameters

Flux:701.76lm Effi.:82.2lm/W Radiant:6245.7mW Iv:0.0mcd
 Efficiency:0.000 Effi Level:A++ (EU 874-2012)

Ele. Parameters

Voltage:U=12.01V Current:I=0.7110A
 Power:P=0.005W Power Factor:PF=1.000

Instrument state

Instrument:Hopoo HP8000S Integral Time: 180.100ms VPeak: 15000
 VDark: 1332 Scan Range: 380-780nm Product ID: 201212248

IES TM-30-2015 Test Report

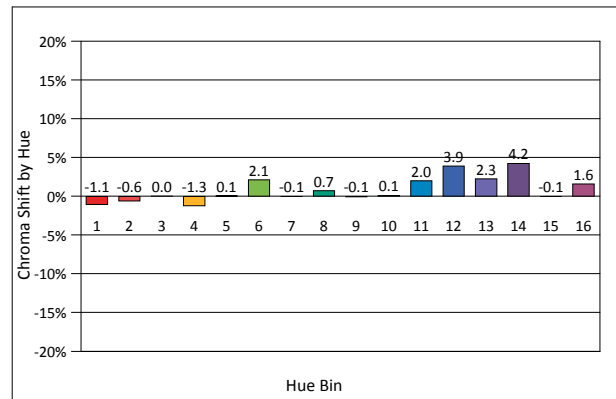
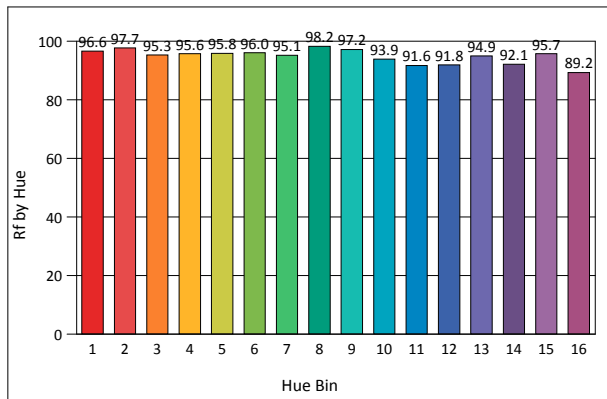
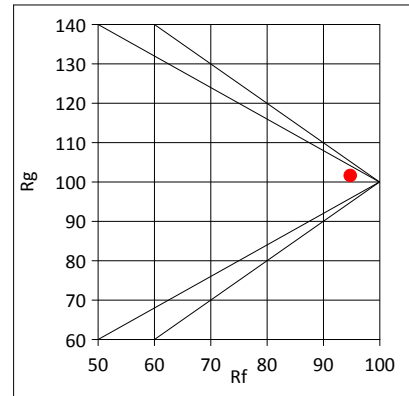
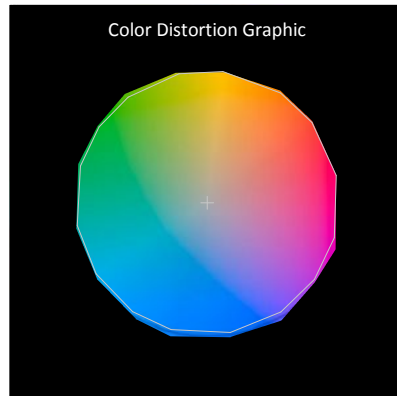
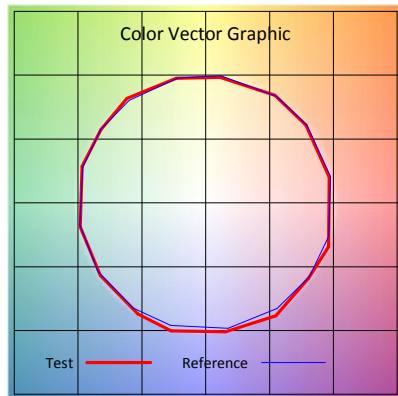
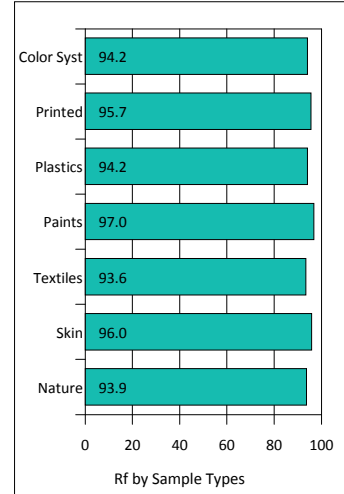
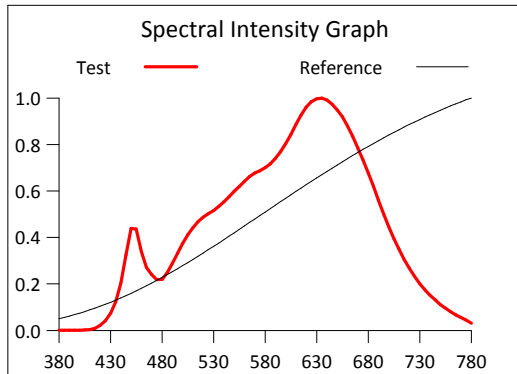
Product Mark

Product Type : 3528 3000K 1M
 Temperature : TECHNOLOGY'C
 Operator : 002
 Remark: BIN:303 VF:2.8-3.0V

Manufacturer : SHENZHEN HULKLED TECHNOLOGY CO.,LTD
 Humidity : 50%
 Test Date : 2018-09-03 14:02:43

Rf: 94.8 CCT(K): 2952 u': 0.2527
 Rg: 101.6 LER: 262.7 Duv: -0.0010 v': 0.3473

Hue Bin	Rf	Graphic Shifts (%)	
		Chroma	Hue
1	96.6	-1.1%	-0.3%
2	97.7	-0.6%	0.4%
3	95.3	0.0%	1.9%
4	95.6	-1.3%	0.2%
5	95.8	0.1%	1.7%
6	96.0	2.1%	0.7%
7	95.1	-0.1%	0.1%
8	98.2	0.7%	-0.5%
9	97.2	-0.1%	1.4%
10	93.9	0.1%	3.5%
11	91.6	2.0%	5.3%
12	91.8	3.9%	1.2%
13	94.9	2.3%	-2.3%
14	92.1	4.2%	-3.8%
15	95.7	-0.1%	-1.3%
16	89.2	1.6%	-7.8%



IES TM-30-2015 Test Report

Product Mark

Product Type : 3528 3000K 1M
 Temperature : TECHNOLOGY'C
 Operator : 002
 Remark: BIN:303 VF:2.8-3.0V

Manufacturer : SHENZHEN HULKLED TECHNOLOGY CO.,LTD
 Humidity : 50%
 Test Date : 2018-09-03 14:02:43

