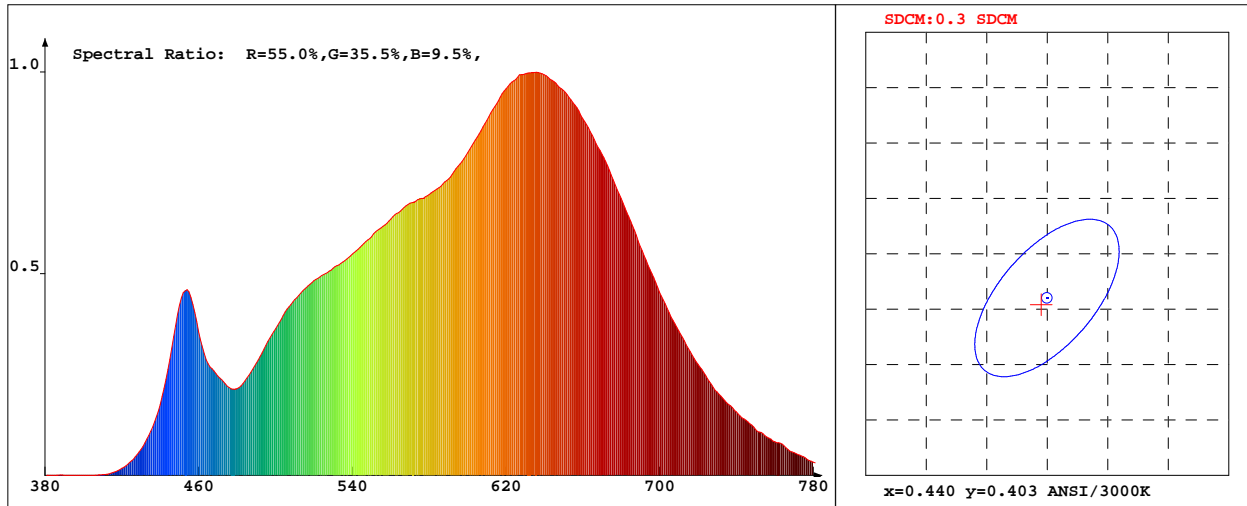


LED Test Report

Product Mark

Product Type : 3528 3000K 1M
 Temperature : TECHNOLOGY'C
 Operator : 002
 Remark: BIN:303 VF:2.8-3.0V

Manufacturer : SHENZHEN HULKLED TECHNOLOGY CO.,LTD
 Humidity : 50%
 Test Date : 2018-09-03 13:52:44



Chroma Parameters

Chro.Coor.:x=0.4395 y=0.4024 u=0.2530 v=0.3474 duv=-0.0010
 CCT: 2943K Dominant Wave.:583.4nm Purity:52.7% Centre Wave:610.0nm
 Flux RGB Ratio:R=24.6%,G=73.6%,B=1.8% Peak Wave:634.7nm Half Width:168.8nm

Rendering Index:Ra= 98.1 CRI= 96.9

R1 =99 R2 =99 R3 =97 R4 =98 R5 =99 R6 =98 R7 =98 R8 =96
 R9 =91 R10=97 R11=97 R12=88 R13=100 R14=98 R15=98
 Fidelity Index(Rf)=94.8 Gamut Index(Rg)=101.4

Photo Parameters

Flux:715.43lm Effi.:83.8lm/W Radiant:6123.1mW Iv:0.0mcd
 Efficiency:0.000 Effi Level:A++ (EU 874-2012)

Ele. Parameters

Voltage:U=12.00V Current:I=0.7110A
 Power:P=0.005W Power Factor:PF=1.000

Instrument state

Instrument:Hopoo HP8000S Integral Time: 180.100ms VPeak: 14776
 VDark: 1310 Scan Range: 380-780nm Product ID: 201212248

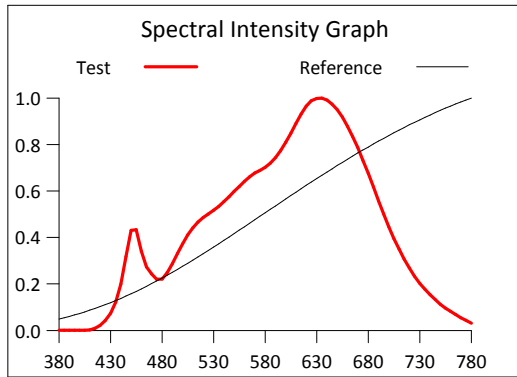
IES TM-30-2015 Test Report

Product Mark

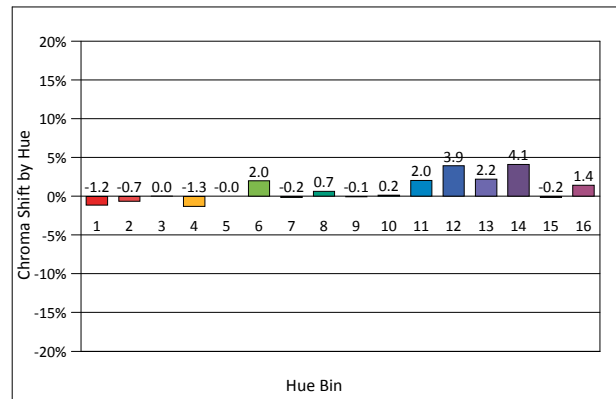
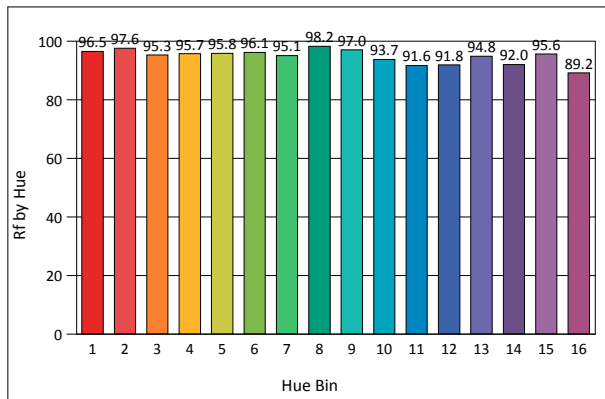
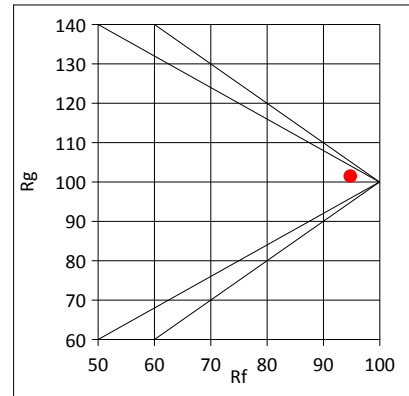
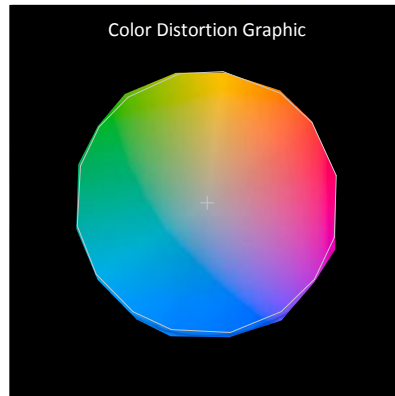
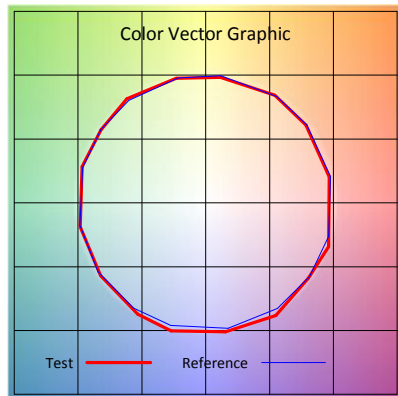
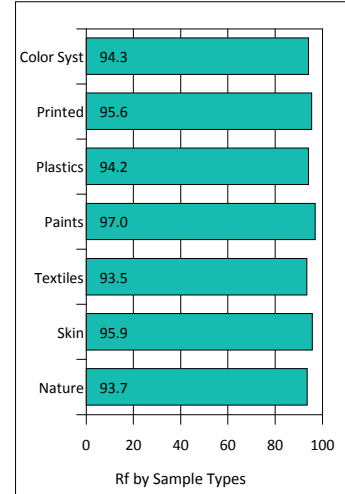
Product Type : 3528 3000K 1M
 Temperature : TECHNOLOGY'C
 Operator : 002
 Remark: BIN:303 VF:2.8-3.0V

Manufacturer : SHENZHEN HULKLED TECHNOLOGY CO.,LTD
 Humidity : 50%
 Test Date : 2018-09-03 13:52:44

Rf: 94.8 CCT(K): 2943 u': 0.2530
 Rg: 101.4 LER: 262.9 Duv: -0.0010 v': 0.3474



Hue Bin	Rf	Graphic Shifts (%)	
		Chroma	Hue
1	96.5	-1.2%	-0.2%
2	97.6	-0.7%	0.4%
3	95.3	0.0%	1.9%
4	95.7	-1.3%	0.1%
5	95.8	-0.0%	1.6%
6	96.1	2.0%	0.7%
7	95.1	-0.2%	0.1%
8	98.2	0.7%	-0.4%
9	97.0	-0.1%	1.5%
10	93.7	0.2%	3.6%
11	91.6	2.0%	5.3%
12	91.8	3.9%	1.1%
13	94.8	2.2%	-2.5%
14	92.0	4.1%	-4.0%
15	95.6	-0.2%	-1.4%
16	89.2	1.4%	-7.8%



IES TM-30-2015 Test Report

Product Mark

Product Type : 3528 3000K 1M
 Temperature : TECHNOLOGY'C
 Operator : 002
 Remark: BIN:303 VF:2.8-3.0V

Manufacturer : SHENZHEN HULKLED TECHNOLOGY CO.,LTD
 Humidity : 50%
 Test Date : 2018-09-03 13:52:44

