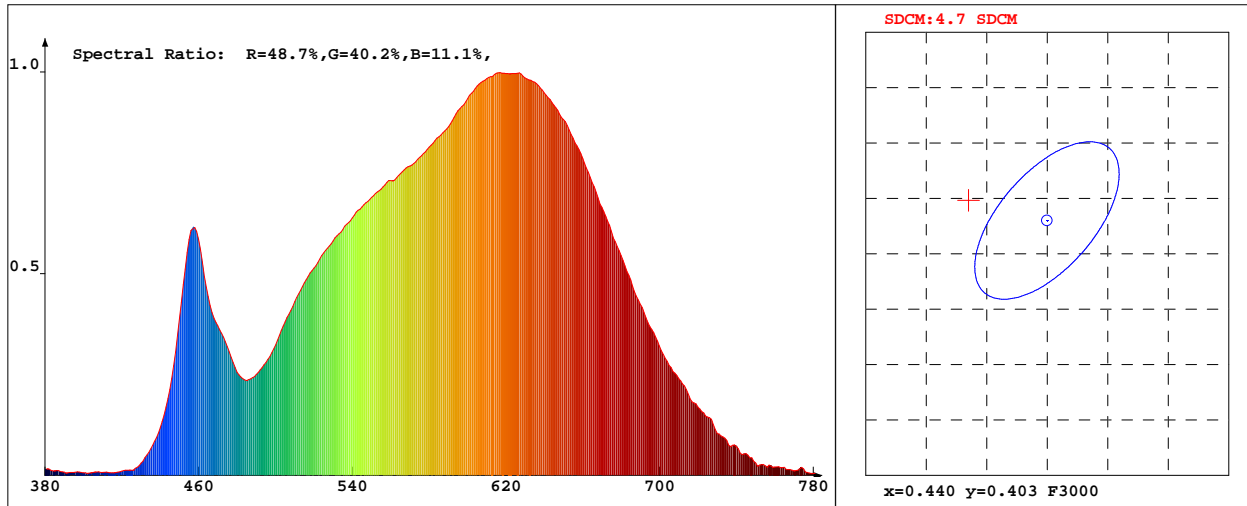


LED Test Report

Product Mark

Product Type : 2110 Single led 3000k Manufacturer : HULKLED TECHNOLOGY CO.,LTD
 Temperature : 25'C Humidity : 50%
 Operator : 01 Test Date : 2018-09-14 10:05:31
 Remark: BIN:



Chroma Parameters

Chro.Coor.:x=0.4335 y=0.4048 u=0.2480 v=0.3474 duv=0.0008
 CCT: 3065K Dominant Wave.:582.3nm Purity:51.6% Centre Wave:600.0nm
 Flux RGB Ratio:R=22.9%,G=75.2%,B=1.9% Peak Wave:614.6nm Half Width:164.6nm

Rendering Index:Ra= 91.7 CRI= 88.6

R1 =92 R2 =95 R3 =96 R4 =91 R5 =91 R6 =93 R7 =93 R8 =83
 R9 =60 R10=87 R11=90 R12=72 R13=93 R14=97 R15=89
 Fidelity Index(Rf)=88.2 Gamut Index(Rg)=97.5

Photo Parameters

Flux:6.710lm Effi.:118.6lm/W Radiant:21.4mW Iv:0.0mcd
 Efficiency:0.002 Effi Level:A++ (EU 874-2012)

Ele. Parameters

Forward Current:If=20.0mA Reverse Voltage:Vr=5.00V
 Forward Voltage:Vf=2.83V Reverse Current:Ir=0.00uA
 Power:P=0.005W

Instrument state

Instrument:Hopoo HP8000S Integral Time: 1000.000ms VPeak: 11960
 VDark: 1423 Scan Range: 380-780nm Product ID: 201212248

IES TM-30-2015 Test Report

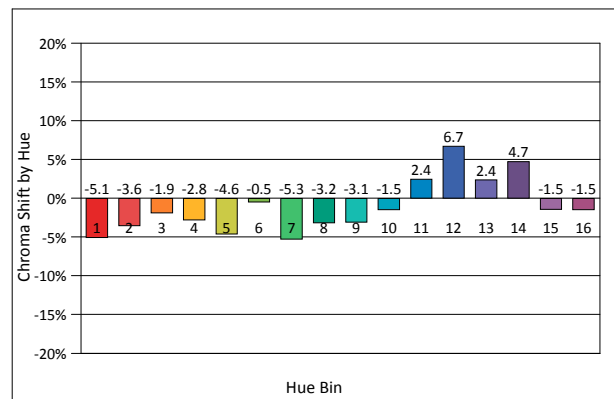
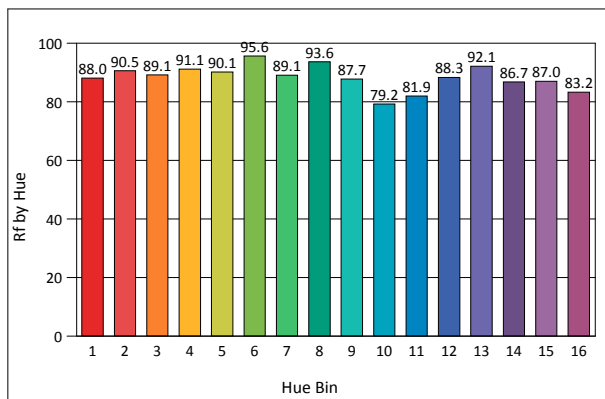
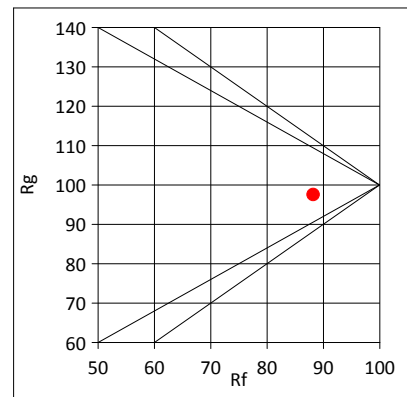
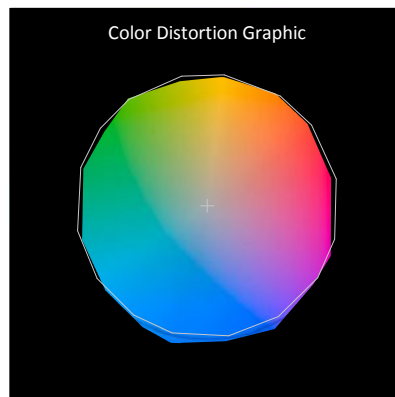
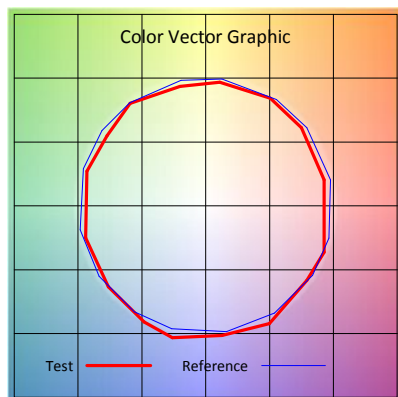
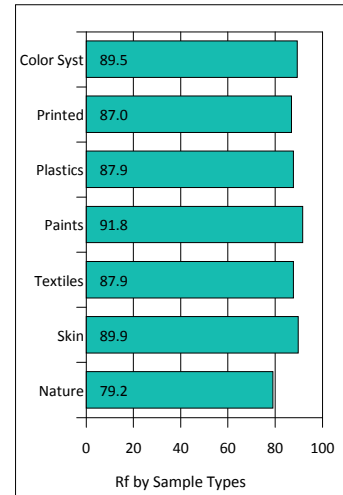
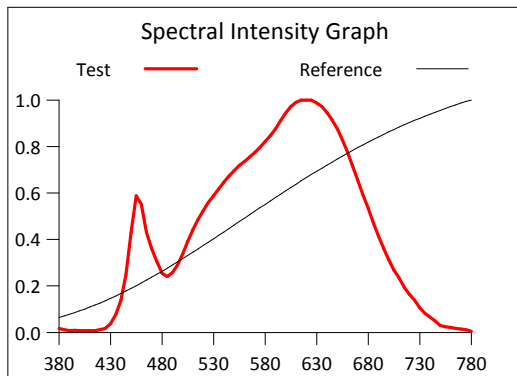
Product Mark

Product Type : 2110 Single led 3000k
 Temperature : 25'C
 Operator : 01
 Remark: BIN:

Manufacturer : HULKLED TECHNOLOGY CO.,LTD
 Humidity : 50%
 Test Date : 2018-09-14 10:05:31

Rf: 88.2 CCT(K): 3065 u': 0.2480
 Rg: 97.5 LER: 295.9 Duv: 0.0008 v': 0.3474

Hue Bin	Rf	Graphic Shifts (%)	
		Chroma	Hue
1	88.0	-5.1%	1.0%
2	90.5	-3.6%	2.3%
3	89.1	-1.9%	4.3%
4	91.1	-2.8%	1.4%
5	90.1	-4.6%	1.8%
6	95.6	-0.5%	-0.1%
7	89.1	-5.3%	1.0%
8	93.6	-3.2%	1.4%
9	87.7	-3.1%	7.0%
10	79.2	-1.5%	11.0%
11	81.9	2.4%	11.1%
12	88.3	6.7%	1.9%
13	92.1	2.4%	-4.0%
14	86.7	4.7%	-7.9%
15	87.0	-1.5%	-5.6%
16	83.2	-1.5%	-11.5%



IES TM-30-2015 Test Report

Product Mark

Product Type : 2110 Single led 3000k
 Temperature : 25'C
 Operator : 01
 Remark: BIN:

Manufacturer : HULKLED TECHNOLOGY CO.,LTD
 Humidity : 50%
 Test Date : 2018-09-14 10:05:31

