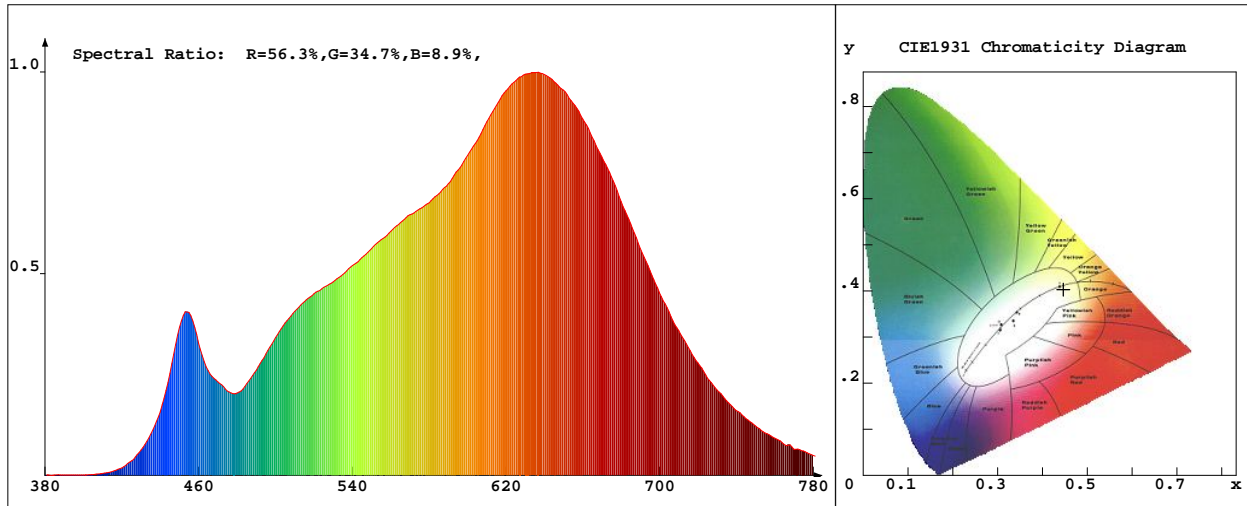


LED Test Report

Product Mark

Product Type : 3528 3000K 1M
 Temperature : TECHNOLOGY'C
 Operator : 002
 Remark: BIN:303 VF:2.8-3.0V

Manufacturer : SHENZHEN HULKLED TECHNOLOGY CO.,LTD
 Humidity : 50%
 Test Date : 2018-09-03 12:15:06



Chroma Parameters

Chro.Coor.:x=0.4467 y=0.4034 u=0.2572 v=0.3484 duv=-0.0015
 CCT: 2836K Dominant Wave.:584.1nm Purity:55.2% Centre Wave:614.6nm
 Flux RGB Ratio:R=25.3%,G=72.9%,B=1.7% Peak Wave:634.7nm Half Width:159.8nm

Rendering Index:Ra= 98.1 CRI= 97.0

R1 =100 R2 =99 R3 =98 R4 =98 R5 =100 R6 =98 R7 =97 R8 =95
 R9 =90 R10=98 R11=97 R12=90 R13=100 R14=98 R15=98
 Fidelity Index(Rf)=95.0 Gamut Index(Rg)=101.5

Photo Parameters

Flux:1454.18lm Effi.:77.8lm/W Radiant:12718.1mW Iv:0.0mcd
 Efficiency:0.000 Effi Level:A++ (EU 874-2012)

Ele. Parameters

Voltage:U=23.96V Current:I=0.7800A
 Power:P=0.005W Power Factor:PF=1.000

Instrument state

Instrument:Hopoo HP8000S Integral Time: 88.658ms VPeak: 15048
 VDark: 1123 Scan Range: 380-780nm Product ID: 201212248

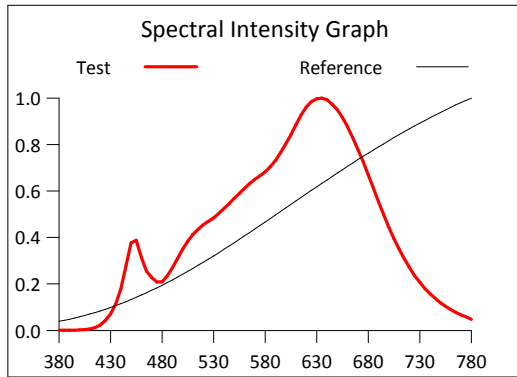
IES TM-30-2015 Test Report

Product Mark

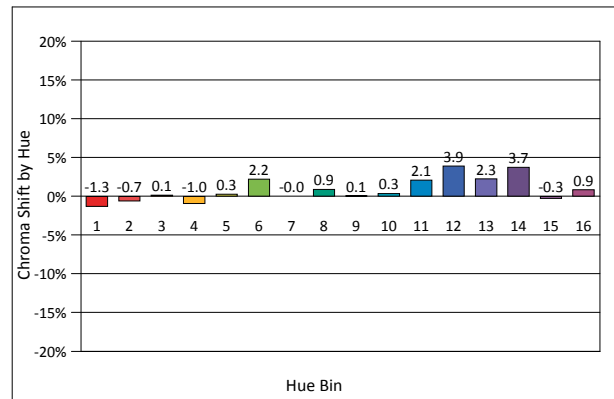
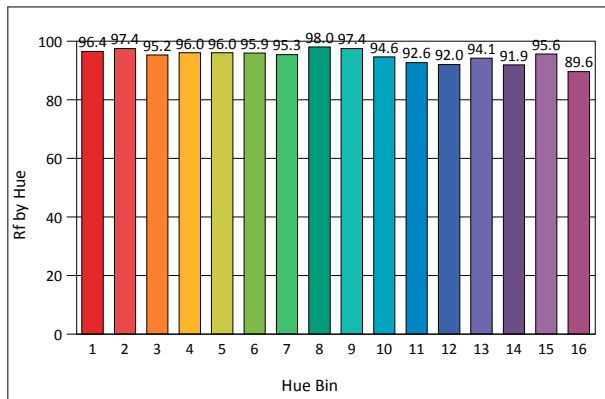
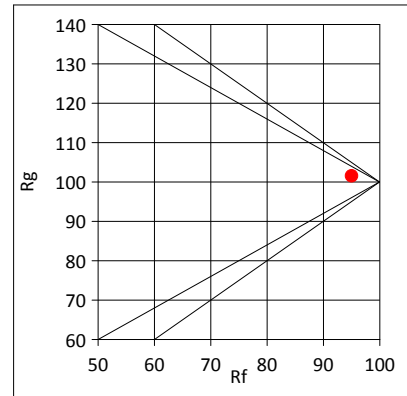
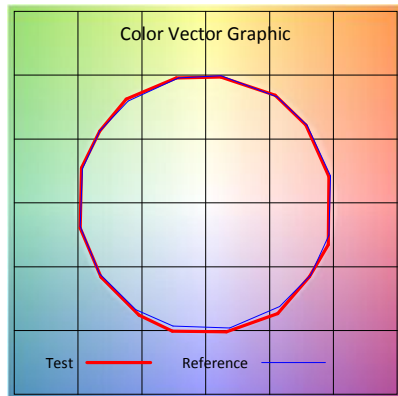
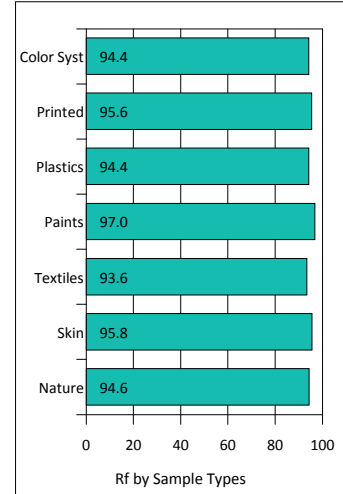
Product Type : 3528 3000K 1M
 Temperature : TECHNOLOGY'C
 Operator : 002
 Remark: BIN:303 VF:2.8-3.0V

Manufacturer : SHENZHEN HULKLED TECHNOLOGY CO.,LTD
 Humidity : 50%
 Test Date : 2018-09-03 12:15:06

Rf: 95.0 CCT(K): 2836 u': 0.2572
 Rg: 101.5 LER: 259.7 Duv: -0.0015 v': 0.3484



Hue Bin	Rf	Graphic Shifts (%)	
		Chroma	Hue
1	96.4	-1.3%	-0.1%
2	97.4	-0.7%	0.6%
3	95.2	0.1%	2.0%
4	96.0	-1.0%	0.2%
5	96.0	0.3%	1.6%
6	95.9	2.2%	0.6%
7	95.3	-0.0%	-0.1%
8	98.0	0.9%	-0.5%
9	97.4	0.1%	1.3%
10	94.6	0.3%	3.0%
11	92.6	2.1%	4.5%
12	92.0	3.9%	0.3%
13	94.1	2.3%	-3.2%
14	91.9	3.7%	-4.5%
15	95.6	-0.3%	-1.6%
16	89.6	0.9%	-7.4%



IES TM-30-2015 Test Report

Product Mark

Product Type : 3528 3000K 1M
 Temperature : TECHNOLOGY'C
 Operator : 002
 Remark: BIN:303 VF:2.8-3.0V

Manufacturer : SHENZHEN HULKLED TECHNOLOGY CO.,LTD
 Humidity : 50%
 Test Date : 2018-09-03 12:15:06

