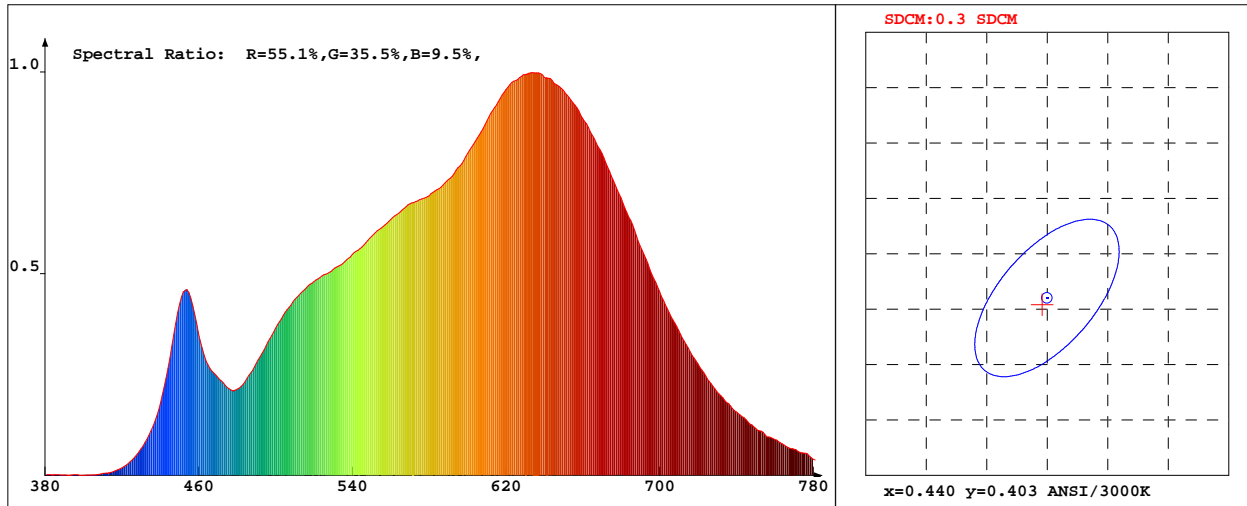


LED Test Report

Product Mark

Product Type : 3528 3000K 1M
 Temperature : TECHNOLOGY'C
 Operator : 002
 Remark: BIN:303 VF:2.8-3.0V

Manufacturer : SHENZHEN HULKLED TECHNOLOGY CO.,LTD
 Humidity : 50%
 Test Date : 2018-09-03 13:59:02



Chroma Parameters

Chro.Coor.:x=0.4396 y=0.4024 u=0.2530 v=0.3474 duv=-0.0010
 CCT: 2942K Dominant Wave.:583.4nm Purity:52.8% Centre Wave:610.5nm
 Flux RGB Ratio:R=24.6%,G=73.6%,B=1.8% Peak Wave:632.7nm Half Width:167.9nm

Rendering Index:Ra= 98.1 CRI= 96.9

R1 =100 R2 =99 R3 =97 R4 =98 R5 =99 R6 =98 R7 =98 R8 =96
 R9 =91 R10=97 R11=97 R12=88 R13=100 R14=97 R15=98
 Fidelity Index(Rf)=94.8 Gamut Index(Rg)=101.5

Photo Parameters

Flux:698.56lm Effi.:81.8lm/W Radiant:5979.9mW Iv:0.0mcd
 Efficiency:0.000 Effi Level:A++ (EU 874-2012)

Ele. Parameters

Voltage:U=12.01V Current:I=0.7110A
 Power:P=0.005W Power Factor:PF=1.000

Instrument state

Instrument:Hopoo HP8000S Integral Time: 180.100ms VPeak: 14392
 VDark: 1327 Scan Range: 380-780nm Product ID: 201212248

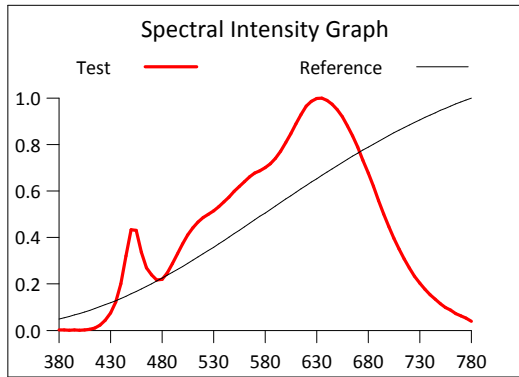
IES TM-30-2015 Test Report

Product Mark

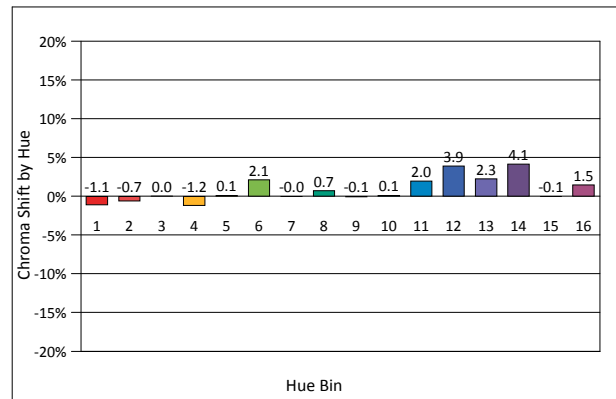
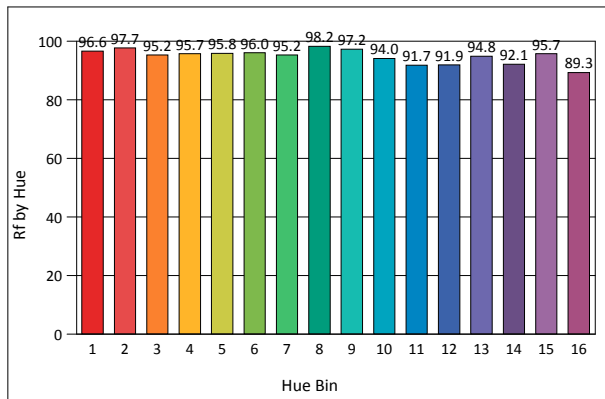
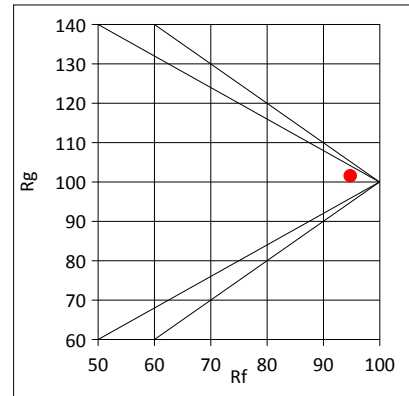
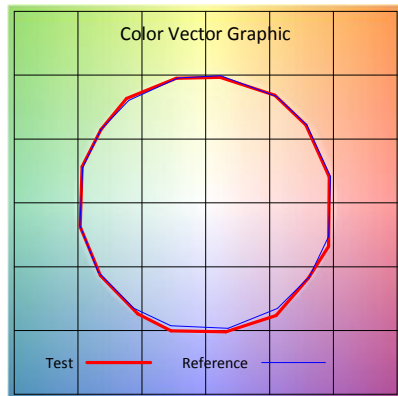
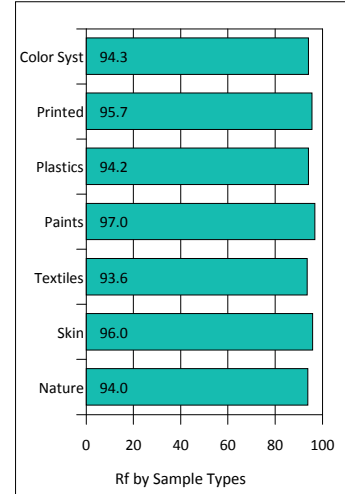
Product Type : 3528 3000K 1M
 Temperature : TECHNOLOGY'C
 Operator : 002
 Remark: BIN:303 VF:2.8-3.0V

Manufacturer : SHENZHEN HULKLED TECHNOLOGY CO.,LTD
 Humidity : 50%
 Test Date : 2018-09-03 13:59:02

Rf: 94.8 CCT(K): 2942 u': 0.2530
 Rg: 101.5 LER: 262.3 Duv: -0.0010 v': 0.3474



Hue Bin	Rf	Graphic Shifts (%)	
		Chroma	Hue
1	96.6	-1.1%	-0.3%
2	97.7	-0.7%	0.4%
3	95.2	0.0%	1.9%
4	95.7	-1.2%	0.2%
5	95.8	0.1%	1.7%
6	96.0	2.1%	0.6%
7	95.2	-0.0%	0.0%
8	98.2	0.7%	-0.5%
9	97.2	-0.1%	1.4%
10	94.0	0.1%	3.4%
11	91.7	2.0%	5.2%
12	91.9	3.9%	1.1%
13	94.8	2.3%	-2.4%
14	92.1	4.1%	-3.9%
15	95.7	-0.1%	-1.4%
16	89.3	1.5%	-7.7%



IES TM-30-2015 Test Report

Product Mark

Product Type : 3528 3000K 1M
 Temperature : TECHNOLOGY'C
 Operator : 002
 Remark: BIN:303 VF:2.8-3.0V

Manufacturer : SHENZHEN HULKLED TECHNOLOGY CO.,LTD
 Humidity : 50%
 Test Date : 2018-09-03 13:59:02

