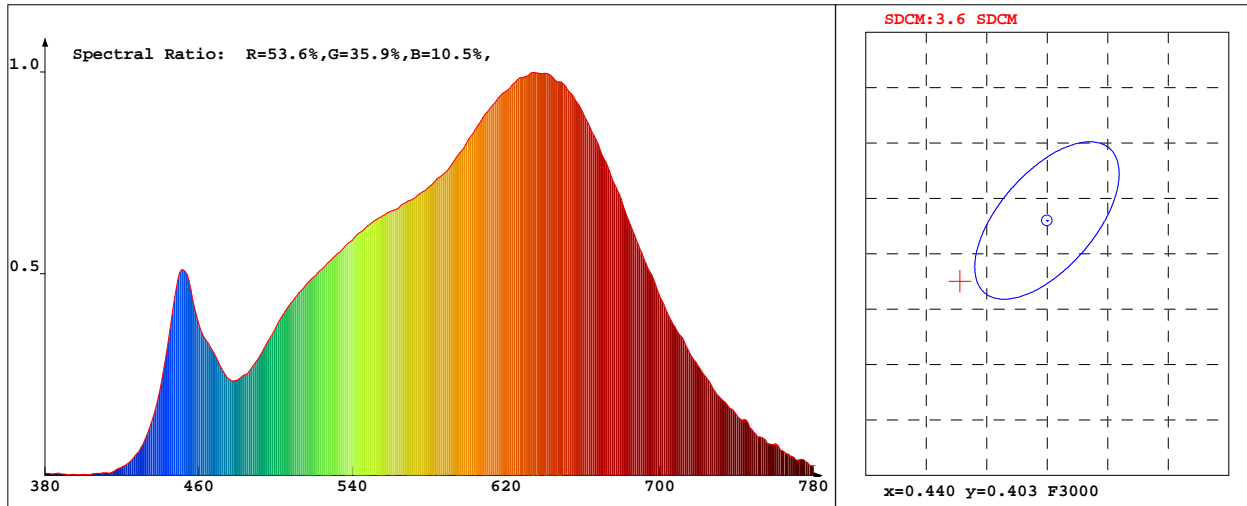


LED Test Report

Product Mark

Product Type : 2835Single led 3000k Manufacturer : HULKLED TECHNOLOGY CO.,LTD
 Temperature : 25'C Humidity : 50%
 Operator : 01 Test Date : 2018-09-10 16:18:56
 Remark: BIN: 30M3-3E1



Chroma Parameters

Chro.Coor.:x=0.4328 y=0.3975 u=0.2507 v=0.3454 duv=-0.0021
 CCT: 3018K Dominant Wave.:583.5nm Purity:49.2% Centre Wave:607.5nm
 Flux RGB Ratio:R=24.1%,G=74.0%,B=1.9% Peak Wave:640.5nm Half Width:173.6nm

Rendering Index:Ra= 97.6 CRI= 96.3

R1 =99 R2 =99 R3 =96 R4 =98 R5 =99 R6 =97 R7 =97 R8 =96
 R9 =90 R10=96 R11=97 R12=87 R13=99 R14=97 R15=98
 Fidelity Index(Rf)=94.0 Gamut Index(Rg)=102.1

Photo Parameters

Flux:18.40lm Effi.:106.1lm/W Radiant:65.4mW Iv:0.0mcd
 Efficiency:0.001 Effi Level:A++ (EU 874-2012)

Ele. Parameters

Forward Current:If=60.0mA Reverse Voltage:Vr=5.00V
 Forward Voltage:Vf=2.89V Reverse Current:Ir=0.00uA
 Power:P=0.005W

Instrument state

Instrument:Hopoo HP8000S Integral Time: 480.626ms VPeak: 14456
 VDark: 1313 Scan Range: 380-780nm Product ID: 201212248

IES TM-30-2015 Test Report

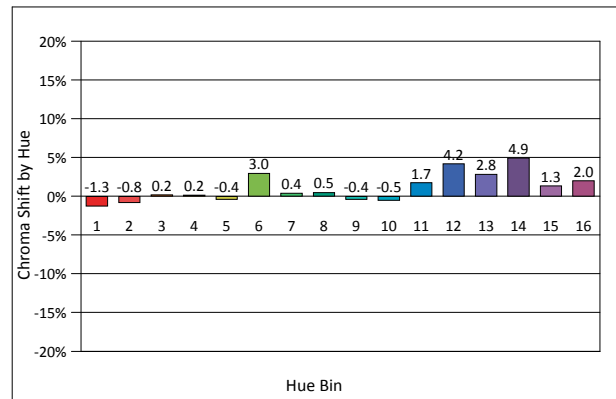
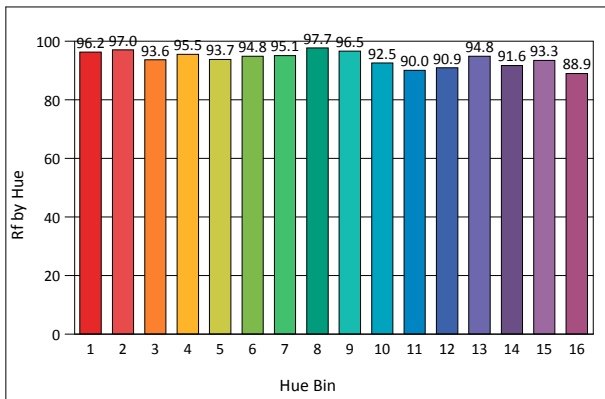
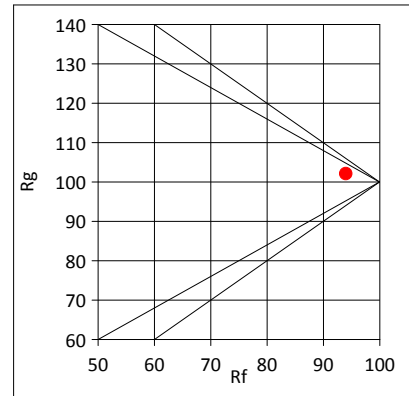
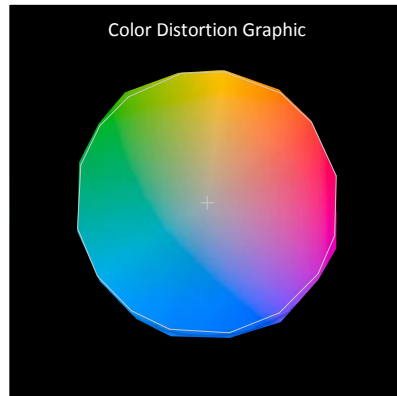
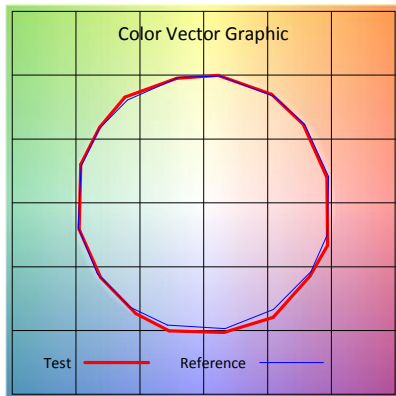
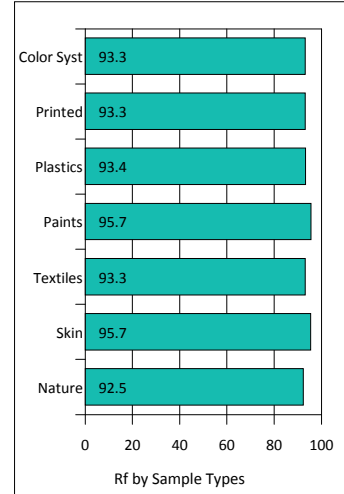
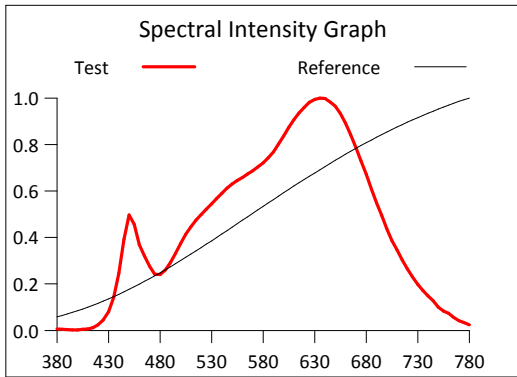
Product Mark

Product Type : 2835Single led 3000k
 Temperature : 25'C
 Operator : 01
 Remark: BIN: 30M3-3E1

Manufacturer : HULKLED TECHNOLOGY CO.,LTD
 Humidity : 50%
 Test Date : 2018-09-10 16:18:56

Rf: 94.0 CCT(K): 3018 u': 0.2507
 Rg: 102.1 LER: 264.8 Duv: -0.0021 v': 0.3454

Hue Bin	Rf	Graphic Shifts (%)	
		Chroma	Hue
1	96.2	-1.3%	-0.4%
2	97.0	-0.8%	0.9%
3	93.6	0.2%	2.8%
4	95.5	0.2%	1.6%
5	93.7	-0.4%	1.9%
6	94.8	3.0%	0.3%
7	95.1	0.4%	-0.7%
8	97.7	0.5%	-1.3%
9	96.5	-0.4%	1.6%
10	92.5	-0.5%	3.8%
11	90.0	1.7%	6.5%
12	90.9	4.2%	2.3%
13	94.8	2.8%	-1.6%
14	91.6	4.9%	-3.6%
15	93.3	1.3%	-3.2%
16	88.9	2.0%	-8.0%



IES TM-30-2015 Test Report

Product Mark

Product Type : 2835Single led 3000k
 Temperature : 25'C
 Operator : 01
 Remark: BIN: 30M3-3E1

Manufacturer : HULKLED TECHNOLOGY CO.,LTD
 Humidity : 50%
 Test Date : 2018-09-10 16:18:56

