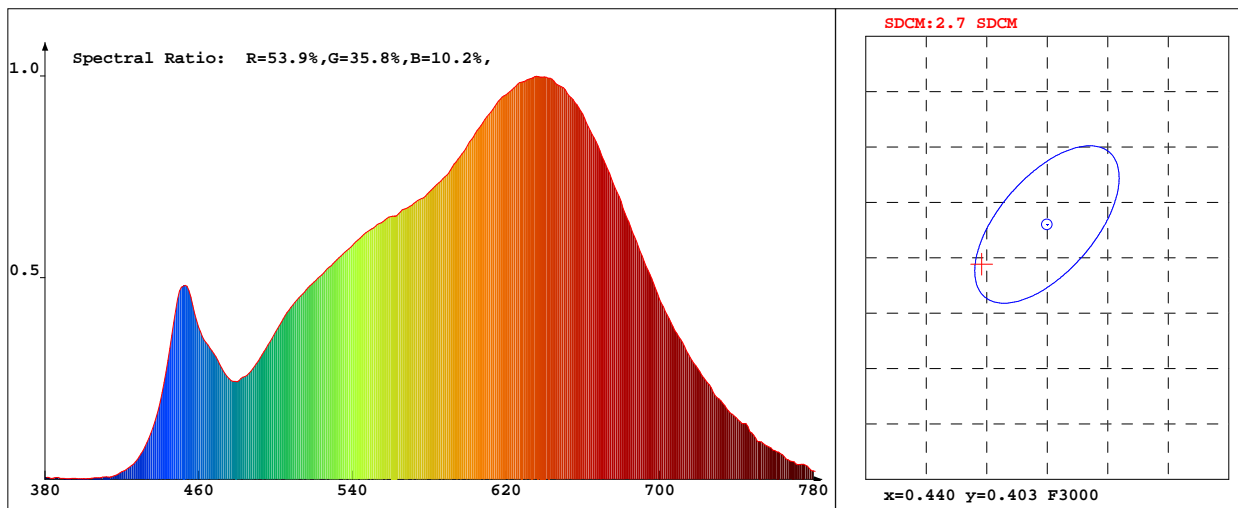


LED Test Report

Product Mark

Product Type : 2835Single led 3000k Manufacturer : HULKLED TECHNOLOGY CO.,LTD
 Temperature : 25'C Humidity : 50%
 Operator : 01 Test Date : 2018-09-10 16:17:28
 Remark: BIN: 30M3-3E1



Chroma Parameters

Chro.Coor.:x=0.4346 y=0.3994 u=0.2511 v=0.3461 duv=-0.0016
 CCT: 3002K Dominant Wave.:583.4nm Purity:50.3% Centre Wave:608.0nm
 Flux RGB Ratio:R=24.2%,G=73.9%,B=1.9% Peak Wave:639.5nm Half Width:172.9nm

Rendering Index:Ra= 97.8 CRI= 96.6

R1 =99 R2 =99 R3 =97 R4 =98 R5 =99 R6 =98 R7 =98 R8 =96
 R9 =90 R10=96 R11=97 R12=87 R13=100 R14=97 R15=98
 Fidelity Index(Rf)=94.2 Gamut Index(Rg)=101.5

Photo Parameters

Flux:18.17lm Effi.:104.8lm/W Radiant:64.7mW Iv:0.0mcd
 Efficiency:0.001 Effi Level:A++ (EU 874-2012)

Ele. Parameters

Forward Current:If=60.0mA Reverse Voltage:Vr=5.00V
 Forward Voltage:Vf=2.89V Reverse Current:Ir=0.00uA
 Power:P=0.005W

Instrument state

Instrument:Hopoo HP8000S Integral Time: 480.626ms VPeak: 14360
 VDark: 1333 Scan Range: 380-780nm Product ID: 201212248

IES TM-30-2015 Test Report

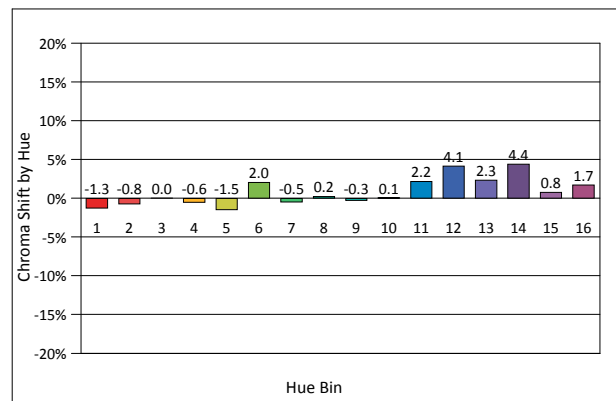
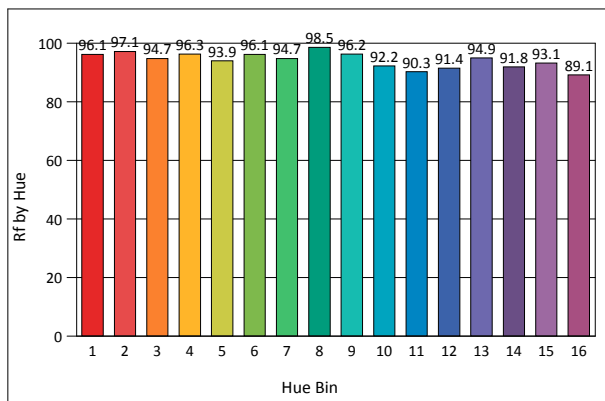
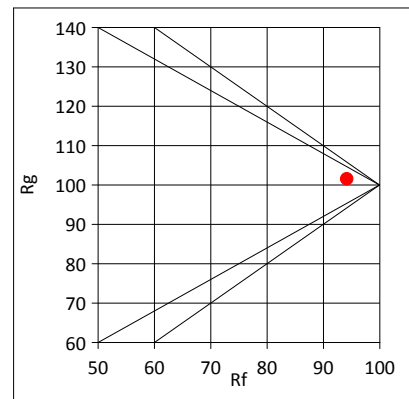
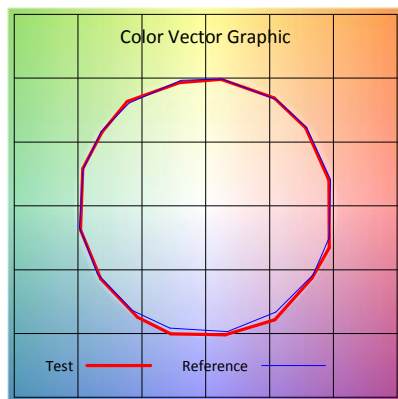
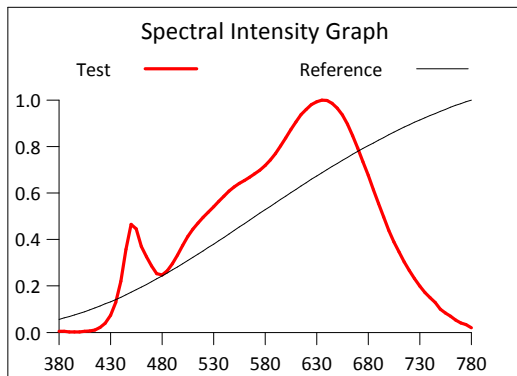
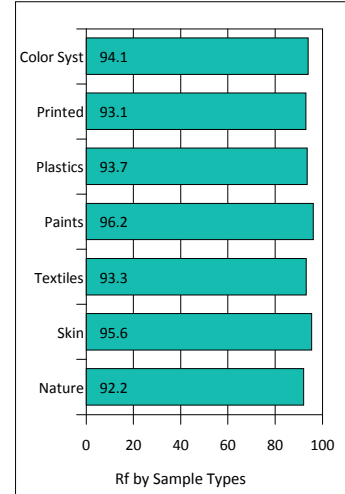
Product Mark

Product Type : 2835Single led 3000k
 Temperature : 25°C
 Operator : 01
 Remark: BIN: 30M3-3E1

Manufacturer : HULKLED TECHNOLOGY CO.,LTD
 Humidity : 50%
 Test Date : 2018-09-10 16:17:28

Rf: 94.2 CCT(K): 3002 u': 0.2511
 Rg: 101.5 LER: 264.7 Duv: -0.0016 v': 0.3461

Hue Bin	Rf	Graphic Shifts (%)	
		Chroma	Hue
1	96.1	-1.3%	-0.1%
2	97.1	-0.8%	0.7%
3	94.7	0.0%	2.1%
4	96.3	-0.6%	0.8%
5	93.9	-1.5%	1.5%
6	96.1	2.0%	0.5%
7	94.7	-0.5%	0.2%
8	98.5	0.2%	-0.5%
9	96.2	-0.3%	2.0%
10	92.2	0.1%	4.5%
11	90.3	2.2%	6.3%
12	91.4	4.1%	1.6%
13	94.9	2.3%	-2.1%
14	91.8	4.4%	-3.9%
15	93.1	0.8%	-2.9%
16	89.1	1.7%	-7.8%



IES TM-30-2015 Test Report

Product Mark

Product Type : 2835Single led 3000k
 Temperature : 25'C
 Operator : 01
 Remark: BIN: 30M3-3E1

Manufacturer : HULKLED TECHNOLOGY CO.,LTD
 Humidity : 50%
 Test Date : 2018-09-10 16:17:28

