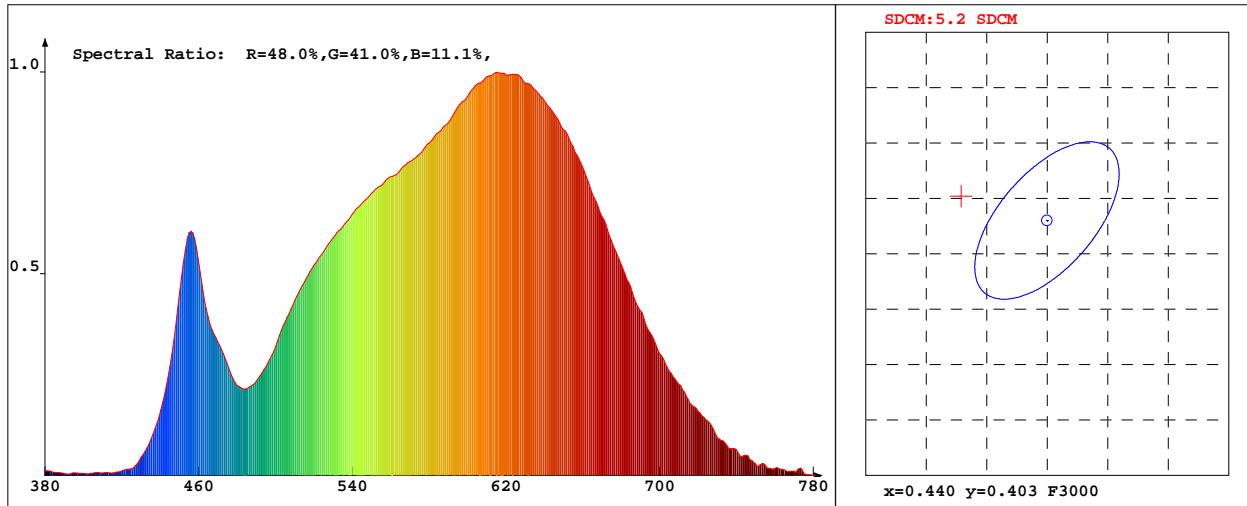


LED Test Report

Product Mark

Product Type : 2110 Single led 3000k Manufacturer : HULKLED TECHNOLOGY CO.,LTD
 Temperature : 25'C Humidity : 50%
 Operator : 01 Test Date : 2018-09-14 10:01:45
 Remark: BIN:



Chroma Parameters

Chro.Coor.:x=0.4329 y=0.4052 u=0.2475 v=0.3475 duv=0.0010
 CCT: 3078K Dominant Wave.:582.1nm Purity:51.6% Centre Wave:598.5nm
 Flux RGB Ratio:R=22.6%,G=75.6%,B=1.8% Peak Wave:614.6nm Half Width:163.9nm

Rendering Index:Ra= 90.4 CRI= 87.0

R1 =90 R2 =94 R3 =95 R4 =90 R5 =89 R6 =91 R7 =93 R8 =81
 R9 =55 R10=84 R11=89 R12=71 R13=91 R14=96 R15=87
 Fidelity Index(Rf)=88.0 Gamut Index(Rg)=98.2

Photo Parameters

Flux:6.870lm Effi.:121.3lm/W Radiant:21.5mW Iv:0.0mcd
 Efficiency:0.002 Effi Level:A++ (EU 874-2012)

Ele. Parameters

Forward Current:If=20.0mA Reverse Voltage:Vr=5.00V
 Forward Voltage:Vf=2.83V Reverse Current:Ir=0.00uA
 Power:P=0.005W

Instrument state

Instrument:Hopoo HP8000S Integral Time: 1000.000ms VPeak: 12088
 VDark: 1428 Scan Range: 380-780nm Product ID: 201212248

IES TM-30-2015 Test Report

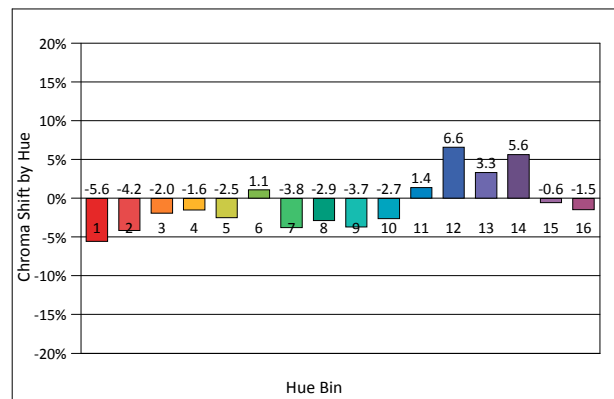
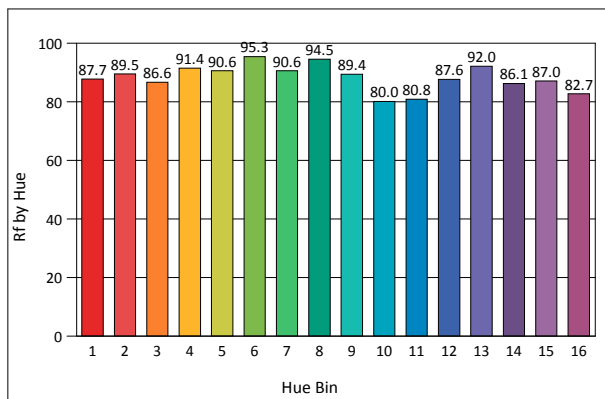
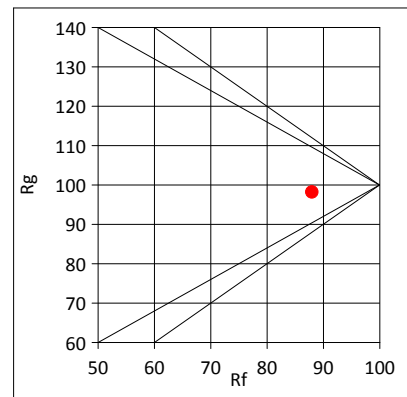
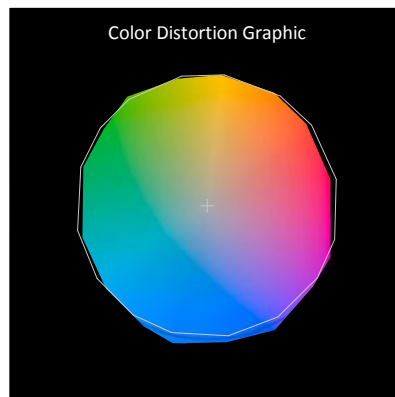
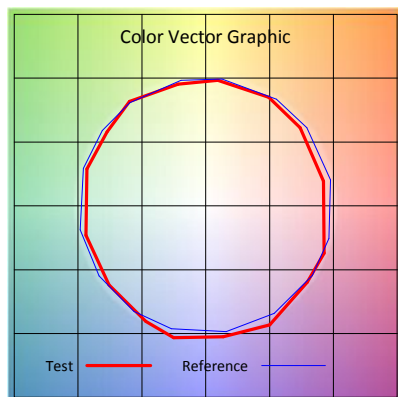
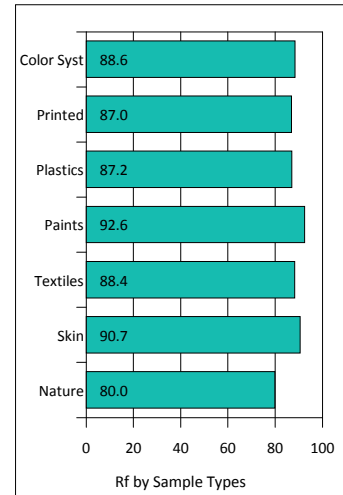
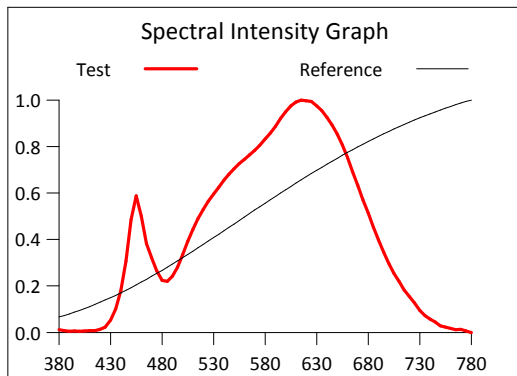
Product Mark

Product Type : 2110 Single led 3000k
 Temperature : 25°C
 Operator : 01
 Remark: BIN:

Manufacturer : HULKLED TECHNOLOGY CO.,LTD
 Humidity : 50%
 Test Date : 2018-09-14 10:01:45

Rf: 88.0 CCT(K): 3078 u': 0.2475
 Rg: 98.2 LER: 300.5 Duv: 0.0010 v': 0.3475

Hue Bin	Rf	Graphic Shifts (%)	
		Chroma	Hue
1	87.7	-5.6%	0.2%
2	89.5	-4.2%	2.9%
3	86.6	-2.0%	5.7%
4	91.4	-1.6%	3.1%
5	90.6	-2.5%	2.7%
6	95.3	1.1%	-0.4%
7	90.6	-3.8%	-1.2%
8	94.5	-2.9%	-0.0%
9	89.4	-3.7%	5.2%
10	80.0	-2.7%	10.2%
11	80.8	1.4%	11.9%
12	87.6	6.6%	3.2%
13	92.0	3.3%	-3.1%
14	86.1	5.6%	-7.9%
15	87.0	-0.6%	-6.7%
16	82.7	-1.5%	-12.1%



IES TM-30-2015 Test Report

Product Mark

Product Type : 2110 Single led 3000k
 Temperature : 25'C
 Operator : 01
 Remark: BIN:

Manufacturer : HULKLED TECHNOLOGY CO.,LTD
 Humidity : 50%
 Test Date : 2018-09-14 10:01:45

